

Containing a ceramide functioning ingredient

Biocera QD/ Biocera G

Glycerin solution containing Glycosphingolipids that is a ceramide functioning ingredient.
 Easily added to formulae and provides cosmetics for aging care.

Biocera QD



Biocera G

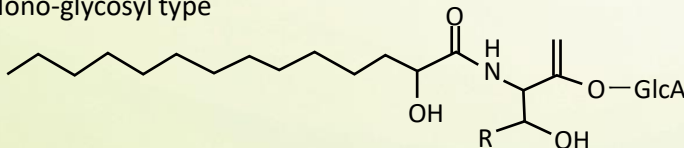


Features

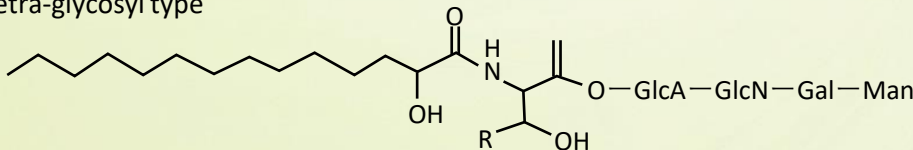
- ① Provides high moisturizing and rough skin improving effects.
- ② Easily mixed with water and gives a microemulsion-like appearance.
- ③ Surfactant-free emulsion can be prepared with its emulsifying properties.

Structure of Glycosphingolipids

Mono-glycosyl type



Tetra-glycosyl type

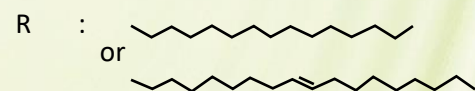


GlcA : Glucuronic acid

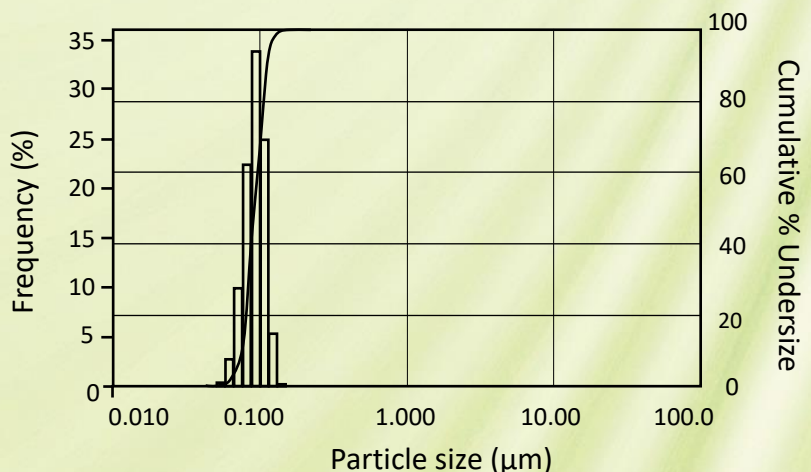
GlcN : Glucosamine

Gal : Galactose

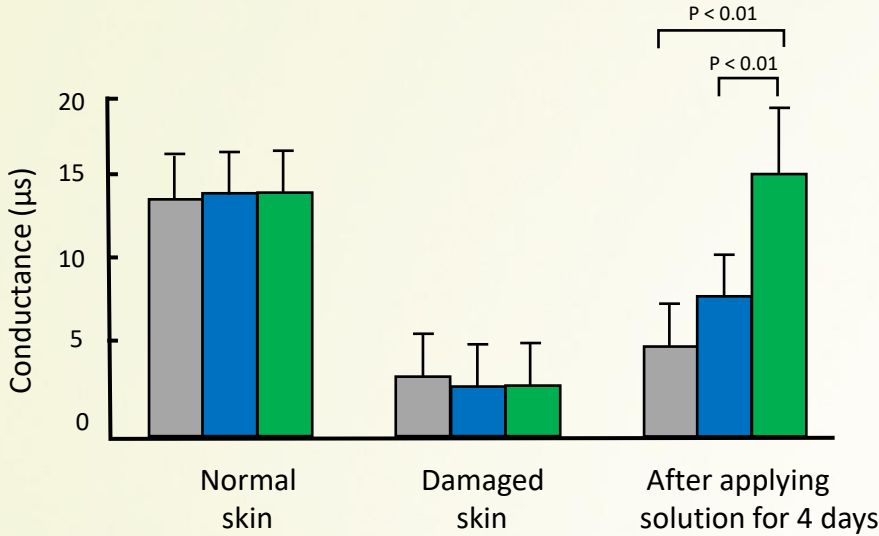
Man : Mannose



Appearance and particle size of 1% Biocera QD soln.

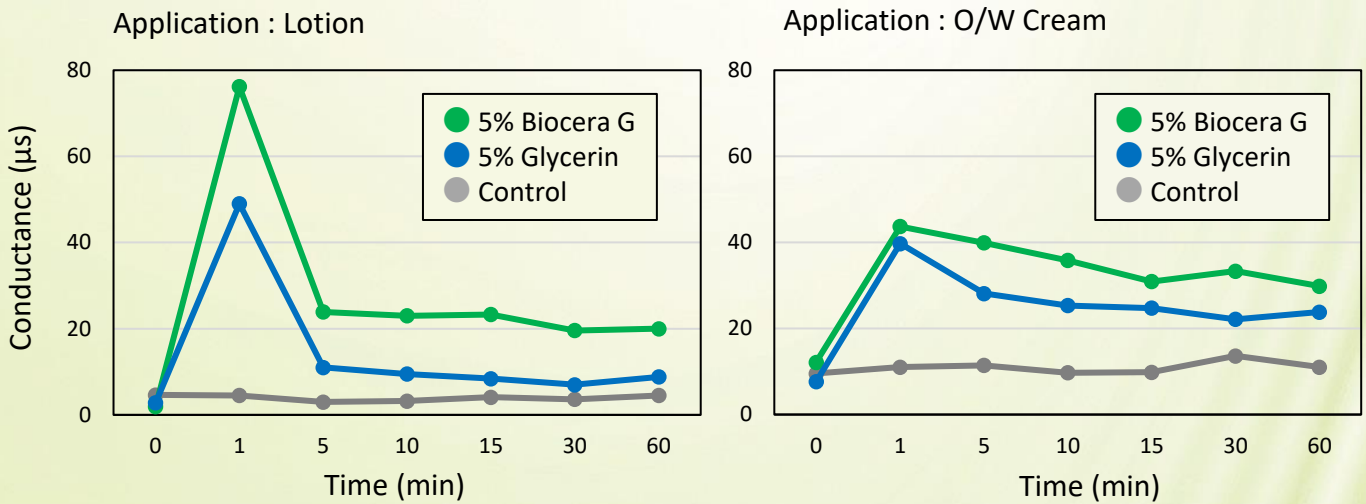


Rough skin improvement effect



Damaged skin was artificially made. Each solution was applied 2 times a day for 4 days, confirmed that the solution with 5% Biocera G is suitable for damaged skin.

Moisturizing effect



Composition

Biocera QD

INCI name

Glycosphingolipids

Glycerin

Tocopherol

Biocera G

INCI name

Sphingomonas Ferment Extract

Glycerin

Tocopherol